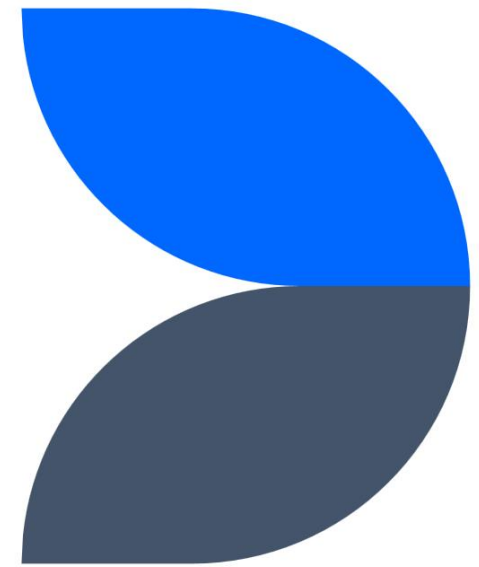


Thornden School
Behaviour Systems
January 2024

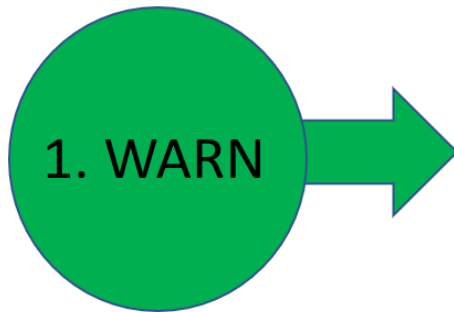


In Lesson Expectations

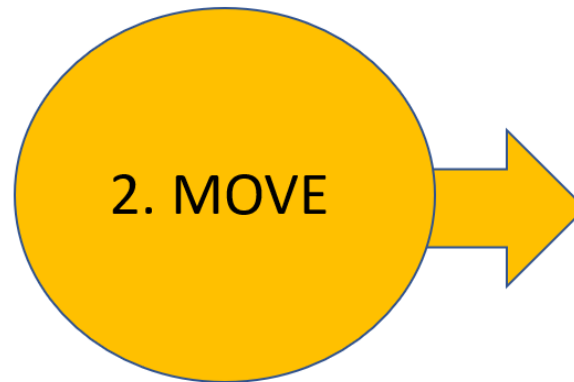


BELONG	CARE	ASPIRE	SUCCEED
<p>Be kind and polite to all staff and students.</p> <p>Be respectful to all staff and students.</p> <p>Respect the learning environment.</p>	<p>Be prepared for the lesson—on time, correct equipment, correct seat, correct uniform.</p> <p>Follow instructions first time, every time.</p> <p>Listen in silence.</p>	<p>Sit up, listen, focus.</p> <p>Actively participate by asking and answering questions.</p> <p>Persevere: keep trying.</p>	<p>Quickly engage in the DO NOW activity.</p> <p>Take pride in your work.</p> <p>Act on feedback given.</p>

DISRUPTION FREE LEARNING

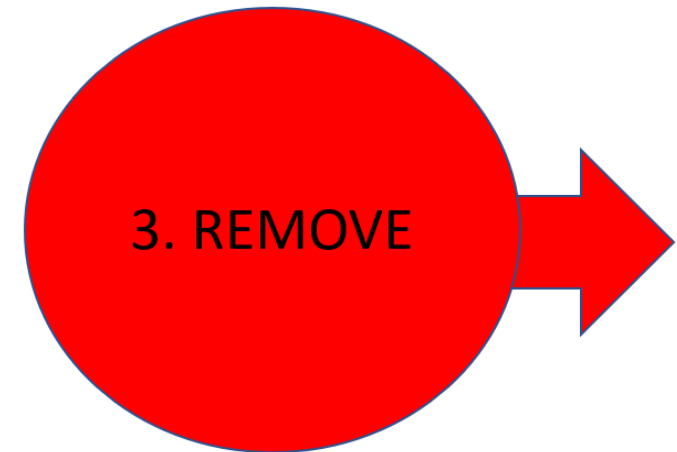


Issued by
member of
staff.



Student hands tracker
to member of staff.

Student moved to
another seat in the
room, or, stands
outside the classroom
for up to 3 minutes.



Student removed from the
lesson to work with HOD.

DISRUPTION FREE LEARNING

1. WARN

Issued by member of staff.

No sanction issued.

Logging on Arbor
Moved in lesson = Break time DT (teacher discretion)
Moved to HOD = 30min dept ASDT
Moved to IR = 45min on-call ASDT

2. MOVE

Student hands tracker to member of staff.

Student moved to another seat in the room, or, stands outside the classroom for up to 3 minutes.

Restorative conversation when student collects tracker.

Class teacher determines if break time DT is issued.

Class teacher logs break time DT on tracker and Arbor.

3. REMOVE

Student removed from the lesson to work with HOD.

Class teacher issues **30min dept. ASDT** on Arbor and contacts home.

Refusal to work with HOD will result in on-call placing the student in the Isolation Room for the remainder of that lesson.

Class teacher issues **45min on-call ASDT** on Arbor and contacts home.

IN CLASS BEHAVIOUR

TIER	BEHAVIOUR TYPES	STAFF ACTION	CONSEQUENCE
T1	<p>DISRUPTIVE BEHAVIOUR</p> <p>WARN in lesson.</p>	<p>Class teacher will:</p> <ul style="list-style-type: none"> Issue a verbal warning to the student using language from our In Lesson Expectations 	<ul style="list-style-type: none"> None.
T2	<p>DISRUPTIVE BEHAVIOUR</p> <p>WARN – <u>MOVE</u> in lesson.</p>	<p>Class teacher will:</p> <ul style="list-style-type: none"> Take student tracker when student is moved. <p><i>Staff discretion</i> – may wish to issue break/ lunchtime DT.</p> <ul style="list-style-type: none"> If break/lunchtime DT is issued – log on student tracker and on Arbor as ‘Disruptive behaviour - moved in lesson (severity 2)’ Restorative conversation. 	<ul style="list-style-type: none"> <i>Possible Break/Lunchtime DT.</i>
T3	<p>DISRUPTIVE BEHAVIOUR</p> <p>1. WARN – MOVE – <u>REMOVE</u> (Works with HOD for remainder of the lesson)</p> <p><i>Move step has already been completed.</i></p>	<p>Class teacher will:</p> <ul style="list-style-type: none"> Liaise with HOD about quality of behaviour and work completed when student was moved to them. Log incident on Arbor as ‘Disruptive behaviour - removed from lesson to HOD (severity 3)’. Contact home to notify parent/carer of the incident. <p>Class teacher will:</p> <ul style="list-style-type: none"> Log incident on Arbor – setting 30-minute dept. ASDT. Contact home to notify parent/carer about lack of home learning. 	<ul style="list-style-type: none"> 30-minute Dept ASDT.
T4	<p>DISRUPTIVE BEHAVIOUR</p>	<p>Class teacher will:</p>	<ul style="list-style-type: none"> 45 minute on-call ASDT.

	<p>WARN – MOVE – REMOVE (Refused to work with HOD and placed in IR by on-call)</p>	<ul style="list-style-type: none"> Alert on-call that the student needs removing. <p>On-call will:</p> <ul style="list-style-type: none"> Email class teacher (cc in HOD and HOY) notifying that the student was placed in the IR. <p>Class teacher will:</p> <ul style="list-style-type: none"> Log incident on Arbor as 'Disruptive behaviour - removed from lesson to IR (severity 4)'. Through Arbor, contact home to notify parent/carer of the incident. 	
<p>T5</p>	<p>SEVERE DISRUPTION (e.g., physical altercation / verbal abuse)</p> <p>Warn – Move – Remove not appropriate.</p>	<p>Class teacher will:</p> <ul style="list-style-type: none"> Alert on-call that the student needs removing. Log incident on Arbor. Contact home to notify parent/carer of the incident (<i>with HOD support if required</i>). Support with any student statements, if possible. Email the relevant HOY: <ul style="list-style-type: none"> - Recommendation for T5 sanction. - Detailed statement of incident (more than is on Arbor). <p>HOY will:</p> <ul style="list-style-type: none"> Determine if T5 sanction is issued and process (with support from PS). Generate recommendation to SLT. Update class teacher with outcome. 	<ul style="list-style-type: none"> Internal or External Suspension

Behaviour Type and Consequence

Behaviour type	Thornden value	Severity	Behaviour points	Workflow	Automatic Consequence	Suggested consequence
Use of phone	CARE	0	0	Y	Escalate to Level 3 after 3 incidents in half a term	
Tutor report	SUCCEED	0	0	X		
HOY report	SUCCEED	0	0	X		
SLT report	SUCCEED	0	0	X		
Chewing gum	CARE	1	1	Y	20mins Community LTDT	
3 strikes	SUCCEED	1	1	Y	30min dept. ASDT	
Littering	BELONG	2	2	Y	20mins Community LTDT	
Out of bounds (on-site)	CARE	2	2	Y	20mins Community LTDT	
Failed to attend/complete break time DT	ASPIRE	2	2	Y	30min dept. ASDT	
Failed to attend/complete 20mins Community LTDT	ASPIRE	2	2	Y	30min dept. ASDT	
Persistent lateness to registration	ASPIRE	2	2	Y	1hr SLT ASDT (after 3 L marks)	
Persistent lateness to lessons	ASPIRE	2	2	Y	1hr SLT ASDT (after 3 L marks)	
Repeated lack of equipment	SUCCEED	2	2	Y	30mins dept. ASDT	
Disturbing another lesson	SUCCEED	2	2	X		Break DT / 30mins dept. ASDT
Disruptive behaviour – moved in lesson	SUCCEED	2	2	X		Break time DT (teacher discretion)

Inappropriate behaviour in lesson	SUCCEED	2	2	X		Break time DT (teacher discretion)/ 30mins dept. ASDT
Inappropriate behaviour break/lunch	CARE	2	2	X		20mins Community LTDT/ 1hr SLT ASDT
Lost/forgotten tracker	SUCCEED	2	2	Y	20mins Community LTDT	
Lack of work completed	SUCCEED	2	2	X		Breaktime DT/ 30mins dept. ASDT
No PE kit (borrowed)	SUCCEED	2	2	Y	30mins dept. ASDT	
Persistent use of phone	CARE	3	3	Y	1hr SLT ASDT (after 3 logs)	
Part lesson truancy	ASPIRE	3	3	Y	30mins dept. ASDT	
Misuse of IT system	CARE	3	3	X		30mins dept. ASDT / 1hr SLT ASDT / IR
Failed to attend/complete 30min dept. ASDT	ASPIRE	3	3	Y	45min on-call ASDT	
Failed to attend/complete 45min on-call ASDT	ASPIRE	3	3	Y	1hr SLT ASDT	
Failed to attend/complete 1hr SLT ASDT	ASPIRE	3	3	Y		IR
Multiple students in a toilet cubicle	CARE	3	3	Y	1hr SLT ASDT	
Breach of Health and Safety rules	SUCCEED	3	3	X		20mins Community LTDT / 30mins dept. ASDT
Persistent incorrect uniform	BELONG	3	3	Y	20mins Community LTDT	

Persistent incorrect make up	BELONG	3	3	Y	20mins Community LTDT	
Persistent incorrect jewellery	BELONG	3	3	Y	20min Community LTDT	
Disruptive behaviour – removed from lesson to HOD	SUCCEED	3	3	Y	30min dept. ASDT	
Arguing	CARE	3	3	N		Break DT / 30mins dept. ASDT
Repeated failure to complete homework	SUCCEED	3	3	Y	30min dept. ASDT	
No PE kit (refused to borrow)	SUCCEED	3	3	Y	45min on-call ASDT	
Bringing the name of the school into disrepute	BELONG	4	4	X		SLT DT / IR
Deliberately pulling another students shorts/trousers down	CARE	4	4	Y	x1 day in IR	
Poor behaviour on school transport	BELONG	4	4	X		SLT DT / IR
Poor behaviour on school trip	BELONG	4	4	X		IR / Suspension
Damage to property	BELONG	4	4	X		20mins Community LTDT/ SLT DT / IR / Suspension
Refusal of school search	BELONG	4	4	X		IR / Suspension
Theft	BELONG	4	4	X		IR / Suspension
Verbal abuse towards student	CARE	4	4	X		1hr SLT ASDT/ IR

Physical contact with another student	CARE	4	4	X		IR / Suspension
Physical contact with member of staff	CARE	4	4	X		IR / Suspension
Intimidating/ threatening behaviour towards student	CARE	4	4	X		IR / Suspension
Intimidating/ threatening behaviour towards staff	CARE	4	4	X		IR / Suspension
Making others feel upset/uncomfortable/ unsafe	CARE	4	4	X		From 20mins community LTDT - Suspension
Breach of behaviour contract	CARE	4	4	X		From 20mins community LTDT - Suspension
Verbal abuse towards staff	CARE	4	4	X		IR / Suspension
Inappropriate language	CARE	4	4	X		1hr SLT ASDT / IR
Smoking/vaping	CARE	4	4	Y	IR	
Defiance	CARE	4	4	X		1hr SLT ASDT/ IR / Suspension
Whole registration truancy	ASPIRE	4	4	Y	1hr SLT ASDT	
Whole lesson truancy	ASPIRE	4	4	Y	1hr SLT ASDT	
Failure to attend multiple DTs in a week	ASPIRE	4	4	Y		IR

Breach of exam conditions	SUCCEED	4	4	Y	1hr SLT ASDT	
Refusal to follow instructions	SUCCEED	4	4	X		30mins dept. ASDT / 1hr SLT ASDT
Disruptive behaviour – removed from lesson to IR	SUCCEED	4	4	Y	45min on-call ASDT	
Refusal to hand over phone / air pods	CARE	4	Y	Y		IR
x3 or more on-calls in 1 week	SUCCEED	4	4	X		IR + 1 hr SLT ASDT
Possessing of illicit substances	BELONG	5	5	X		Suspension/PEX
Deliberately exposing another student by pulling their clothes down	CARE	5	5	Y	Suspension	
Prejudicial language - Religion	PREJUDICAL LANGUAGE	5	5	X		1hr SLT DT / IR / Suspension
Prejudicial language - Disability	PREJUDICAL LANGUAGE	5	5	X		1hr SLT DT / IR / Suspension
Prejudicial language - Sexuality	PREJUDICAL LANGUAGE	5	5	X		1hr SLT DT / IR / Suspension
Prejudicial language - Race	PREJUDICAL LANGUAGE	5	5	X		1hr SLT DT / IR / Suspension
Prejudicial language - Gender	PREJUDICAL LANGUAGE	5	5	X		1hr SLT DT / IR / Suspension
Derogatory language - Homophobic	DEROGATORY LANGUAGE	5	5	X		1hr SLT DT / IR / Suspension
Derogatory language - Biphobic	DEROGATORY LANGUAGE	5	5	X		1hr SLT DT / IR / Suspension

Derogatory language - Transphobic	DEROGATORY LANGUAGE	5	5	X		1hr SLT DT / IR / Suspension
Assault on student	CARE	5	5	X		Suspension
Assault on staff	CARE	5	5	X		Suspension / PEX
Inappropriate sexualised behaviour	CARE	5	5	X		IR / Suspension
Repeated lesson truancy	ASPIRE	5	5	Y		IR
Failed to complete Isolation Room successfully	ASPIRE	5	5	X		Repeat IR / Suspension

Notes

LTDT – Lunchtime Detention

ASDT – After school Detention

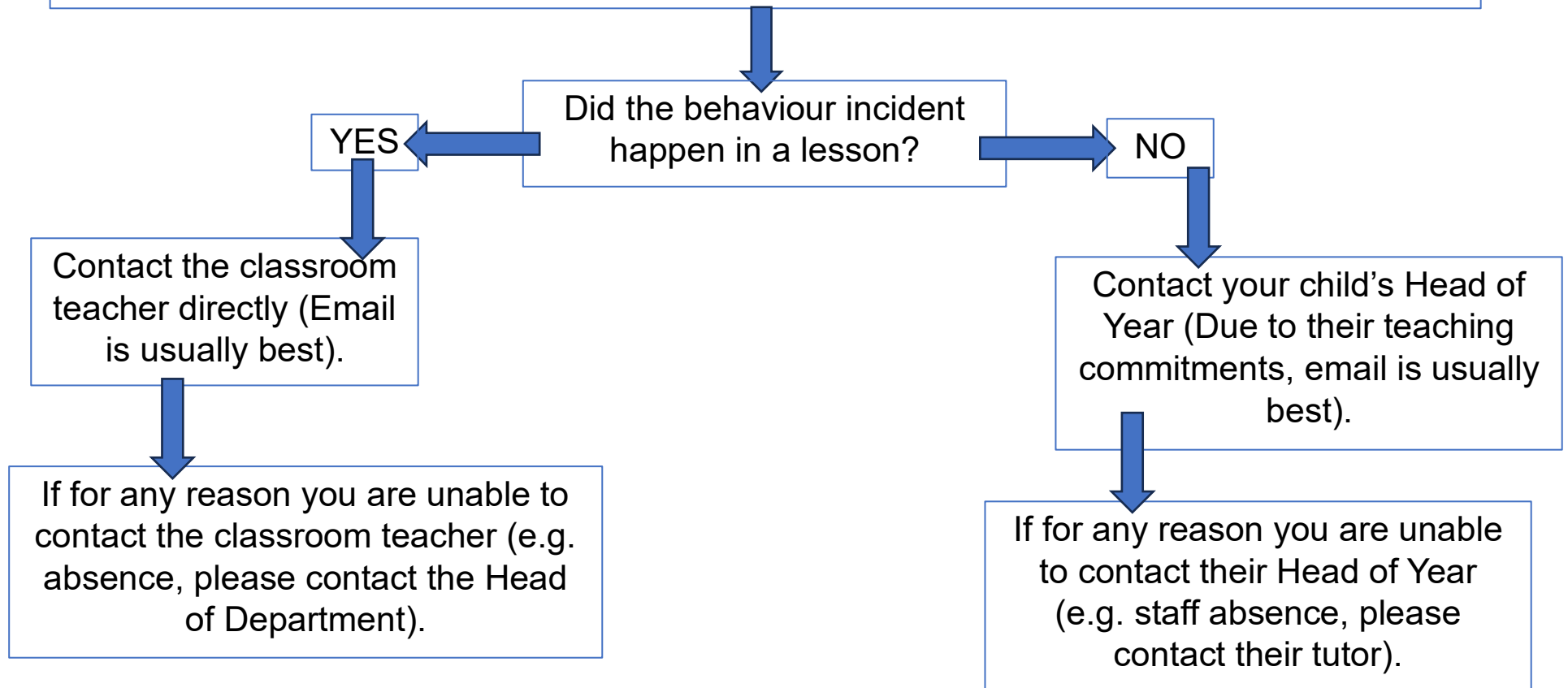
SLT DT – Senior Leadership Team Detention

IR – Isolation Room

Suspension – External Suspension

PEX – Permanent Exclusion

As a parent/carer, who do I speak to following an incident?



Please note, as a school we have 48hours to respond to your enquiry.

Detentions

Parental consent is not required for a detention, the school informs parents of detentions to work in partnership with parents to support students in correcting their behaviour. Communication of any detentions will be done via Arbor. Same day detentions will only apply to break time detentions, unless agreed with the parent. Currently, for any detentions after school hours, the school will give the parent 24 hours' notice.

Detentions can be set during the school day:

- Breaktime.

Detentions can be set outside normal school hours:

- Up to an hour after the school day ends.

What do I do if my child cannot attend a Detention?

Parents/carers are responsible for ensuring their child attends the detention. If a student fails to attend their detention the sanction will be escalated (see table below). The only exceptions to this will be if there is a **family emergency** or the child has a **medical appointment**. **It is the responsibility of parents to notify the school in advance if their child cannot attend a detention and staff will not accept a verbal request from a student.**

Behaviour Consequences/Detentions

DETENTION TYPE	STAFF SUPERVISING	DAYS OF THE WEEK
Break time DT	Individual teachers	Monday, Tuesday, Wednesday, Thursday, Friday.
30min dept. ASDT	Centralised detention rota	Monday, Tuesday, Wednesday, Thursday.
45 min on-call ASDT	HOD	Tuesday.
20mins Community LTDT	HOY	Monday, Tuesday, Wednesday, Thursday.
SLT 1hr ASDT	SLT	Thursday.

DETENTION NOT ATTENDED/FAILED	CONSEQUENCE
Break time DT	30min dept ASDT
20min Community LTDT	30min dept ASDT
30min dept. ASDT	45min on-call ASDT
45min. on-call ASDT	1hr SLT ASDT
1hr SLT ASDT	IR
Failed to attend multiple DTs within one week	IR (HOY discretion)

Note:

ASDT – After School Detention

LTDT – Lunchtime Detention

SLT – Senior Leadership Team