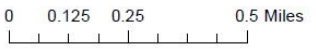
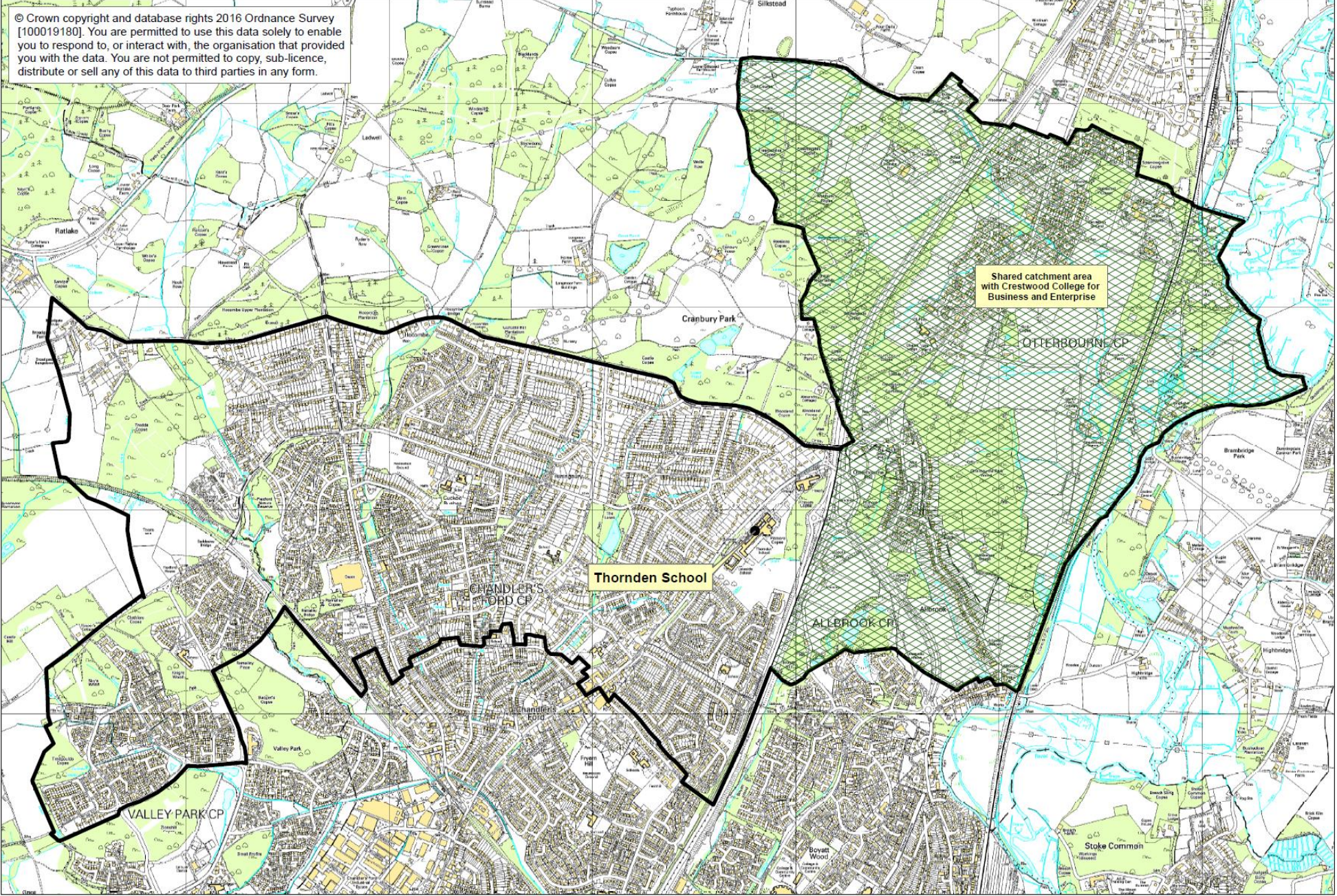


© Crown copyright and database rights 2016 Ordnance Survey [100019180]. You are permitted to use this data solely to enable you to respond to, or interact with, the organisation that provided you with the data. You are not permitted to copy, sub-licence, distribute or sell any of this data to third parties in any form.



Thornden School Catchment Map

Following a decision of the Schools Adjudicator (ADA4117), the admission policy was revised, to give effect to that decision. Consequently, the catchment area boundary for the school has been adjusted to include the houses to the North and North East of Brownhill Road, that were previously in the catchment area of The Toynbee School. A map of the affected area can be seen below.



Please note it will be the 2026-2027 Admissions Round before the Local Authority (LA) has updated its own catchment maps.